

Create iZZi dialer for Windows Vista 64 bits platform



Step 1: Click the Windows Start button and select the “Control Panel”

Step 2: In the control panel page, select “View network status and tasks” under “Network and Internet” categories



Step 3: Network and Sharing Center page prompt out and select “Set up a new connection or network”

Tasks

- View computers and devices
- Connect to a network
- Manage wireless networks
- Set up a connection or network
- Manage network connections
- Diagnose and repair

Network and Sharing Center

View full map

IZZISALAES-PC (This computer) — MWBGC2 — Internet

MWBGC2 (Public network) [Customize](#)

Access	Local and Internet	
Connection	Wireless Network Connection (MWBGC2)	View status
	Signal strength: Excellent	Disconnect

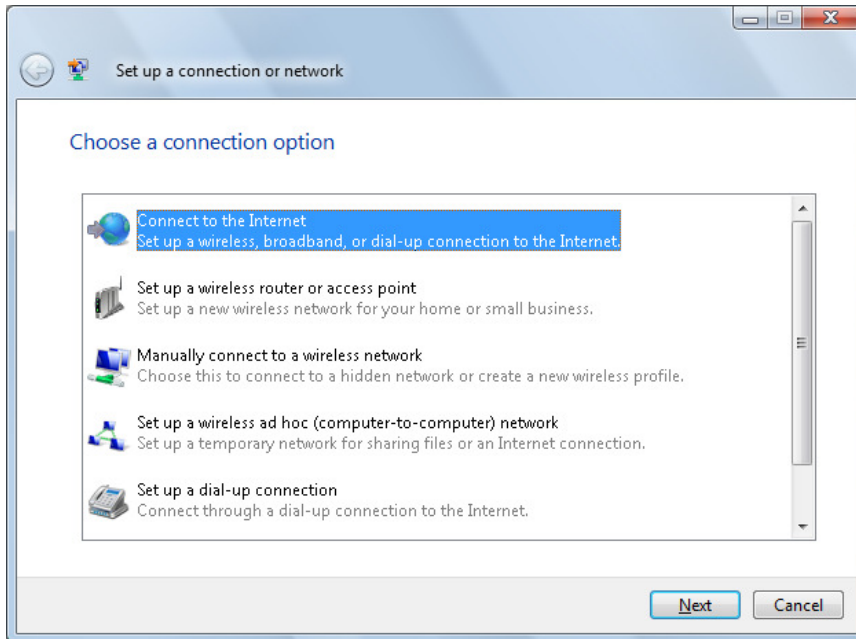
Sharing and Discovery

Network discovery	<input checked="" type="radio"/> On	▼
File sharing	<input checked="" type="radio"/> On	▼
Public folder sharing	<input type="radio"/> Off	▼
Printer sharing	<input type="radio"/> Off	▼
Password protected sharing	<input checked="" type="radio"/> On	▼
Media sharing	<input type="radio"/> Off	▼

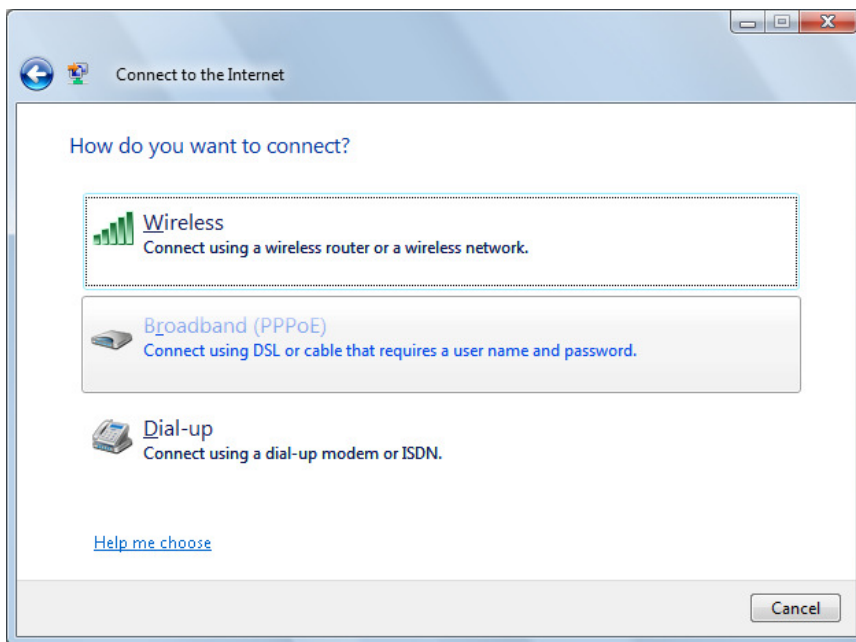
[Show me all the files and folders I am sharing](#)

[Show me all the shared network folders on this computer](#)

Step 4: Select **“Connect to the Internet”** at the page Set up a connection or Network and click **“Next”**



Step 5: Select **“Broadband (PPPoE)”**, “Connect to the Internet” page will show out



Step 6: Enter username, password and "iZZI" as connection name, click "connect" for connecting to Internet

Connect to the Internet

Type the information from your Internet service provider (ISP)

User name:

Password:

Show characters

Remember this password

Connection name:



Allow other people to use this connection
This option allows anyone with access to this computer to use this connection.

[I don't have an ISP](#)

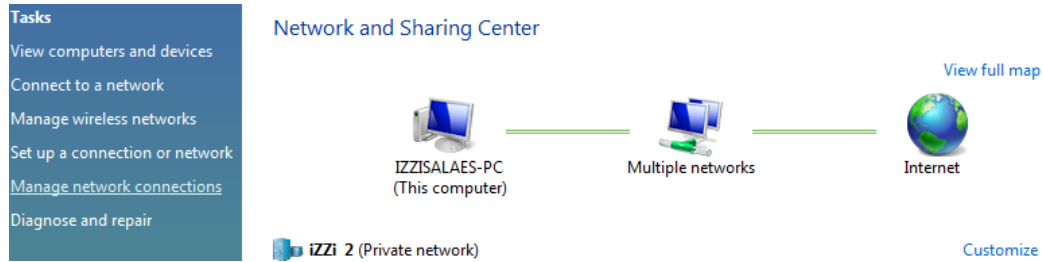
Step 7: "You are connected to the Internet" message prompt out for successful connecting to Internet

Connect to the Internet

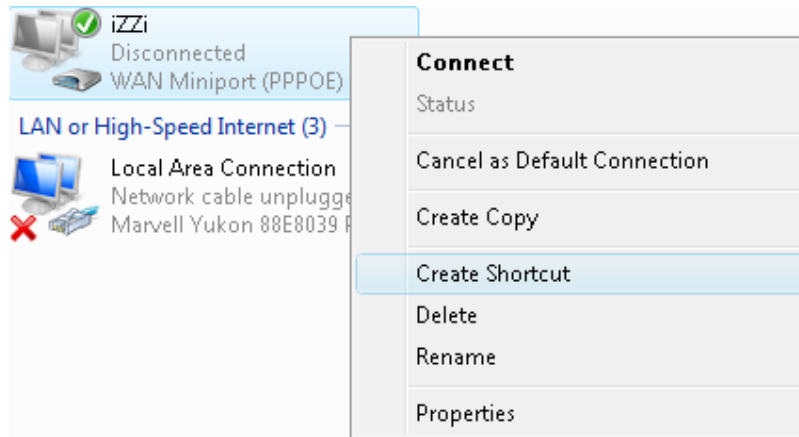
Testing your Internet connection...

 ————— 

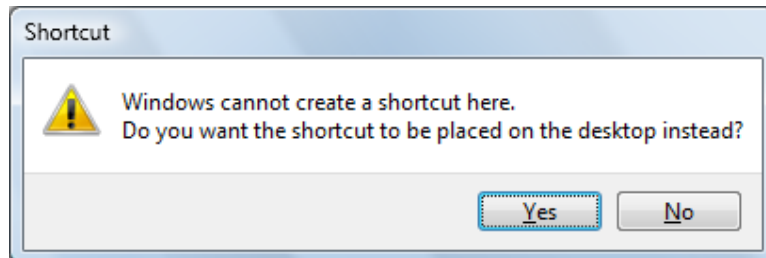
Step 8: Repeat Step 1 and 2, select **“Manage network connections”**



Step 9 : Point to the **“iZZi”** and right click **“Create Shortcut”**



Step 10: Click **“Yes”** button create shortcut placed on the desktop



Step 11: Go to Desktop **“iZZi dialer Shortcut”** is created successful



Step 12: Click “iZZi dialer Shortcut” and click “**Connect**” button at on Connect iZZi Dialer page to access the Internet

